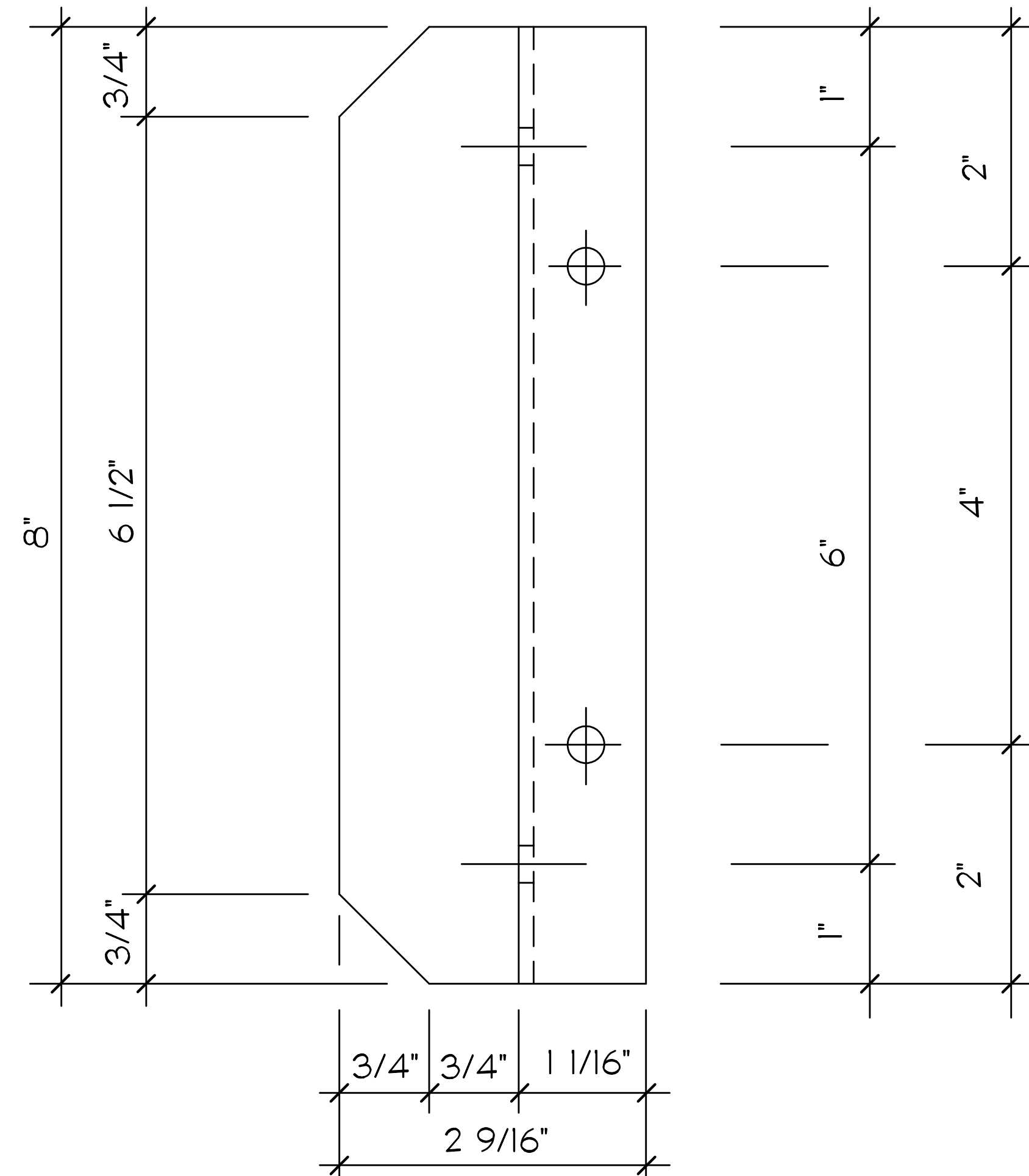
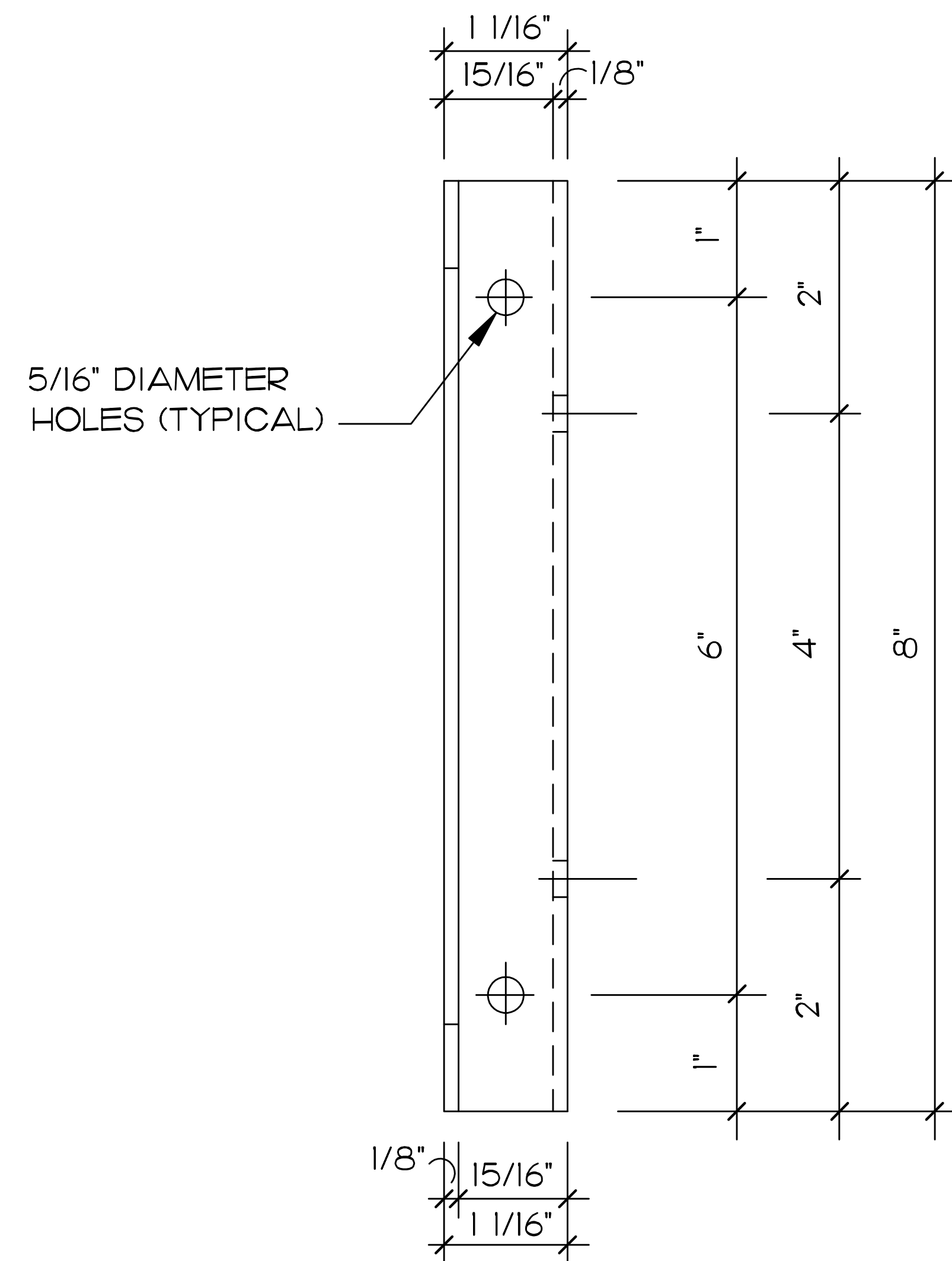


REVISIONS		
SYM	DATE	APPROVED



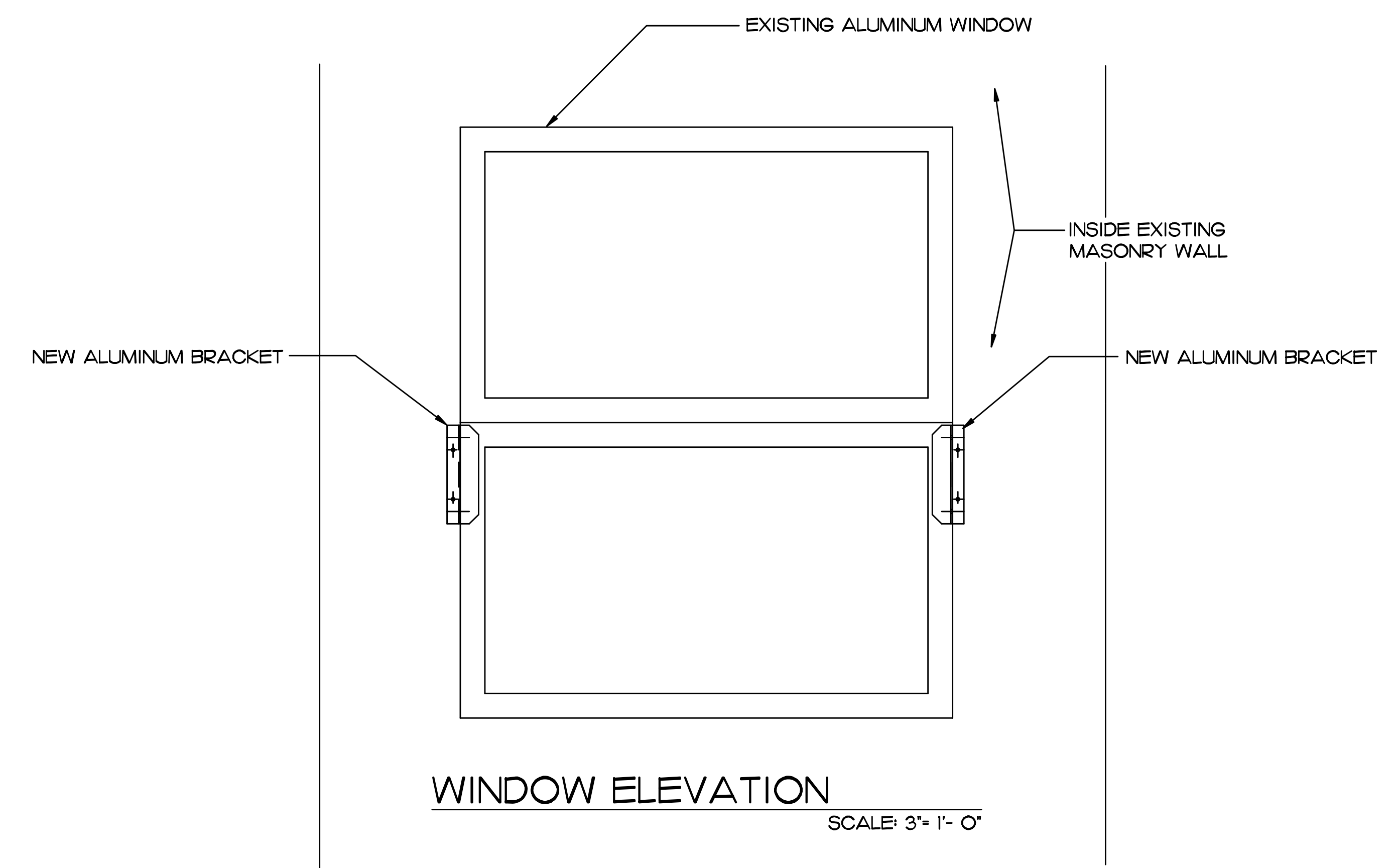
**FRONT VIEW**  
SCALE: 1"= 1"



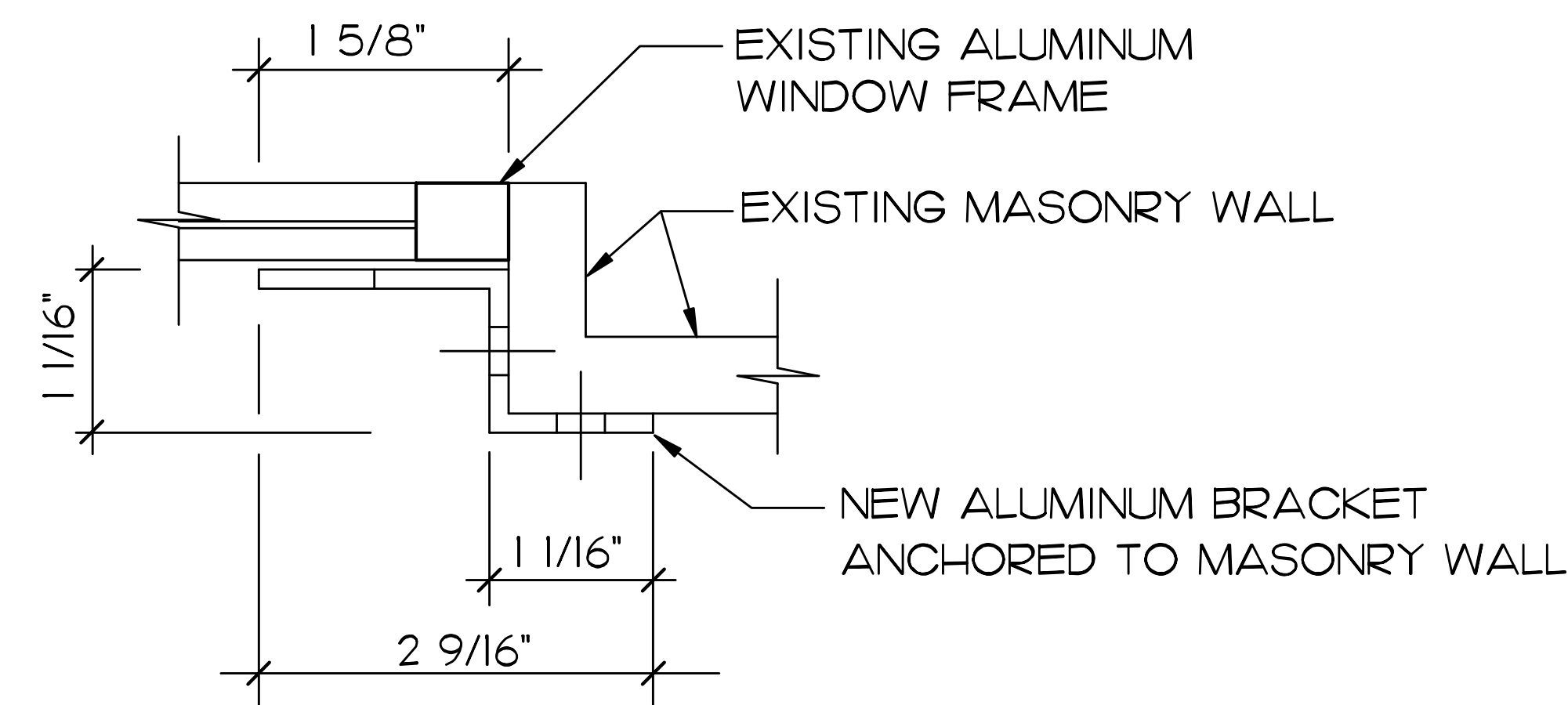
**SIDE VIEW**  
SCALE: 1"= 1"

**GENERAL NOTES**

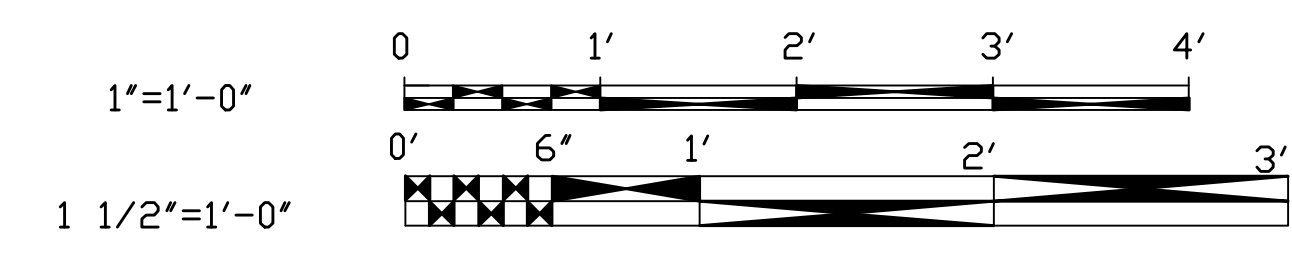
1. THIS DRAWING INDICATES GENERAL CONDITIONS WITH INFORMATION COMPILED FROM SURFACE OBSERVATION AND RECORD DRAWINGS.
2. CONTRACTOR SHALL BE RESPONSIBLE FOR ACTUAL FIELD VERIFICATION PRIOR TO BIDDING, ORDERING MATERIALS AND DURING EVERY STEP OF CONSTRUCTION FOR EXISTING SURFACES, DIMENSIONS AND CONDITIONS.
3. REPAIR AND REFINISH AREAS DAMAGED OR DISTURBED BY NEW WORK TO BE PROVIDED UNDER THIS CONTRACT.
4. THE CONTRACTOR SHALL PROVIDE ALL MATERIAL, LABOR, EQUIPMENT, AND SUPERVISION REQUIRED TO ACCOMPLISH THE INSTALLATION OF TWO BRACKETS ATTACHED TO THE MASONRY WALL THROUGH THE ALUMINUM FRAME OF WINDOWS AS INDICATED.
5. THE CONTRACTOR WILL SUBMIT TWO SAMPLE BRACKETS FOR GOVERNMENT INSPECTION PRIOR TO START OF PRODUCTION.
6. PROVIDE TWO BRACKETS EACH FOR 161 ROOMS FOR A TOTAL OF 322 BRACKETS INSTALLED. BRACKETS WILL BE 125" THICK ALUMINUM WITH A DARK BRONZE FINISH TO MATCH EXISTING WINDOWS IN SIZE AS SHOWN. BRACKETS WILL BE ANCHORED THROUGH 5/16" HOLES INTO EXISTING MASONRY WALL WITH ANCHOR/EXPANSION BOLTS AS SHOWN.
7. ANCHOR TOP OF BRACKET AT MID POINT OF WINDOW ON INSIDE WALL AS SHOWN. SEE WINDOW ELEVATION.
8. BRACKETS CAN BE SUPPLIED BY BUT NOT LIMITED TO, CARVER MACHINE WORKS, WASHINGTON, NC; MID-STATE MACHINE COMPANY, MOUNT ULLA, NC; TENCARVA MACHINERY, GREENSBORO, NC.



**WINDOW ELEVATION**  
SCALE: 3"= 1'- 0"



**SECTION THRU WINDOW JAMB**  
SCALE: 1"= 1"



**A-1**

DES. AL SAMUEL		NAVFAC DRAWING NO. 60006039	
DR. C GATEWAY		CONST. CONTR. NO. N40085-10-B-0142	
CHK. AL SAMUEL		SCALE: NOTED	
SUBMITTED BY: AL SAMUEL		SPEC. 05-10-0142	
DESIGN DIR. BRIAN MARSHBURN		SHEET 1 OF 1	
APPROVED: PWO OR OIC		DATE: JUNE 15, 2010	
SATISFACTORY TO:		DATE:	

DEPARTMENT OF THE NAVY  
NAVAL FACILITIES ENGINEERING COMMAND  
**MARINE CORPS BASE**  
CAMP LEJEUNE, NORTH CAROLINA  
**BLDG. AS-4004**  
**WINDOW REPAIR**  
DETAILS AND NOTES